

Release Date: online after 11:00, 8 December 2021

OPR: Park Policy Division, Yongsan Park Planning Office, MOLIT

Contact Information : KIM Hyun Jin, PARK Sae Jin, Go Gyung Gon (02-2131-2037, 2032)

#YongsanGarrison#OpenToPublic#Redesign

Returned areas within Yongsan Garrison to be open to the public

-Starting the redesign of the Sports Field and the Softball Park -

The Ministry of Land, Infrastructure and Transport (MOLIT, Minister NOH Hyeong-ouk) has announced the start of the redesign work of the returned areas within the Yongsan Garrison, specifically the Sports Field¹, and the Softball Park², which will be open to the public for temporary use.

Through public survey, the ministry has confirmed the development plan for the two areas and have completed its design.

Near to the National Museum of Korea, the Sports Field which was used as a space for sports and working out for U.S. armed forces will stay as an area for sports, and the park and golf driving range within the Sports Field will be turned into a walking path.

Located South East of the Yongsan Garrison, the Softball Park will be used as a gym after construction and will also have an area for recreational events considering that the location is adjacent to the 5th Officers Quarters.

The ministry is expected to complete its redesign by next March, and is planning to open up the facilities to the public after completing additional services including reservation systems for sports facilities.

Mr. Bok-Hwan Kim, Director General for Yongsan Park Planning Office at MOLIT, said, “This step is of great significance in the sense that returned areas are expected to be open to the public for the first time after the announcement of the Yongsan Park Development Plan in 2005.”

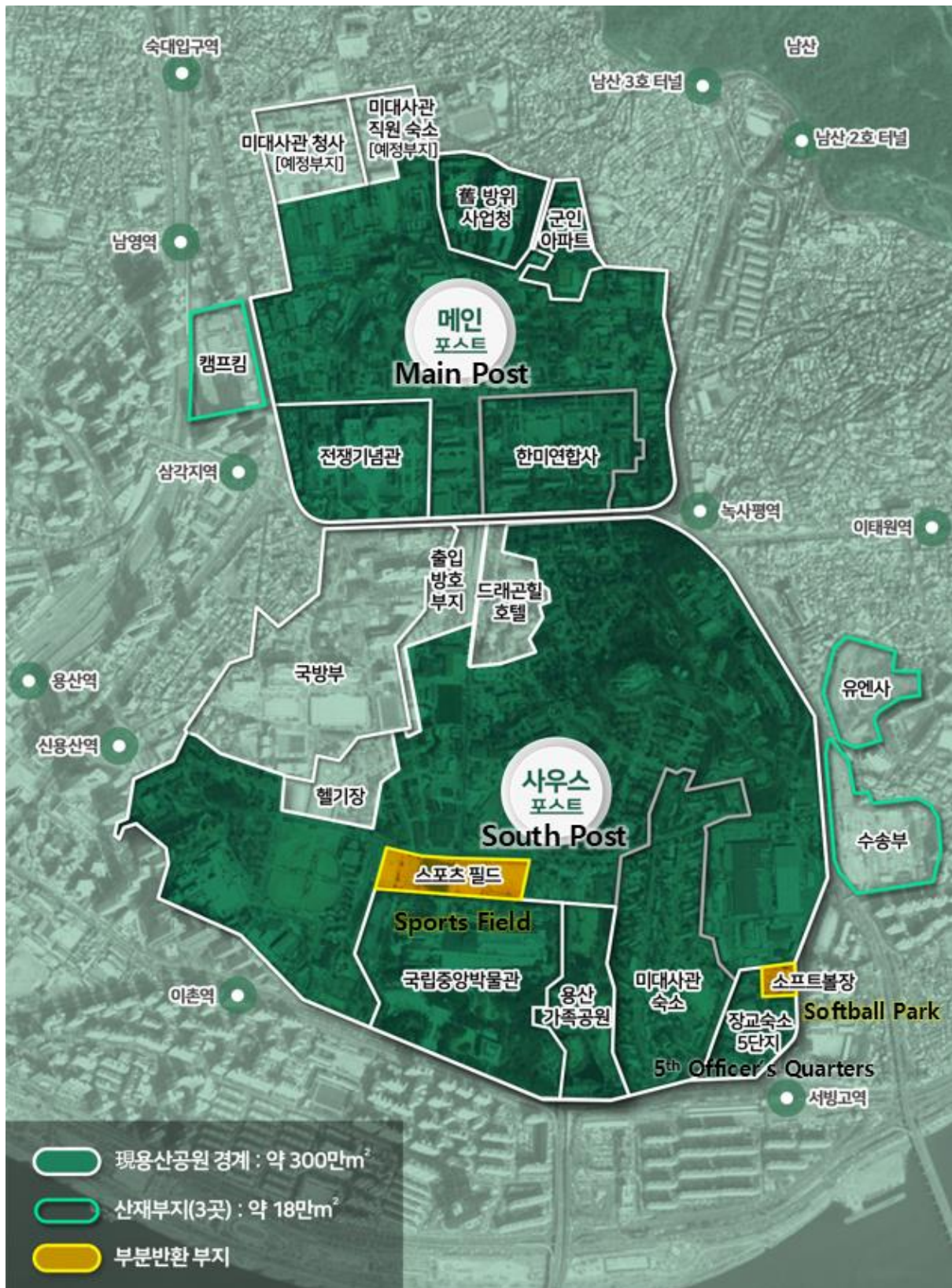
He added, “We will continue to open up the returned areas to the public and do our utmost best to fulfil the expectations of the public regarding the Yongsan Park.”

For further information regarding the above article or request for covers,
please contact Sae Jin PARK (02-2131-2037) or (Emily) Seonwoo PARK (044-201-3056)

¹ Area of approximately 45 thousand square meters, the Sports Field is located North of the National Museum of Korea

² Area of approximately 8 thousand square meters, the Softball Park is located South East of the garrison and North of the 5th Officer’s quarters

Appendix #1 Map of Yongsan Garrison in Central City





<Sports Field>



<Softball Park and 5th Officers Quarters>

